



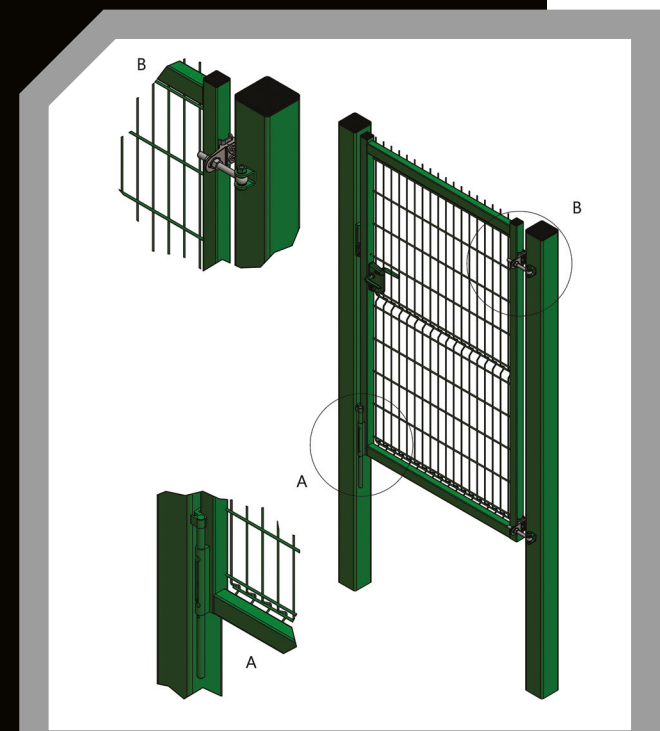
Vision Gates

Every fence line needs at least one gate to allow for the safe passage of people and vehicles. The VisionMesh™ Swing Gates fit seamlessly with the VisionMesh™ profiled panel system and are available as single and double leaf options.

The rigid profiled panels of the VisionMesh™ are welded into the swing gate frames, making them extremely hard-wearing and giving them a real heavy-duty feel.

The VisionMesh™ Swing Gates are supplied with 4D fully adjustable anti-lift-off hinges, which are so versatile that they can be configured to achieve a gate install that opens outwards, inwards and to 180deg opening, ensuring that whatever your application these gates can be installed to suit.

Gates are fitted with a Locinox Security Handle lock and Keep as standard, although you can enhance security with your choice of options from our Locking and Closing range.



Gate dimensions

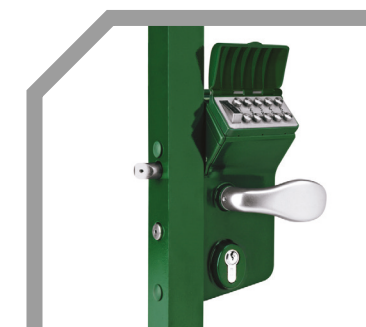
Heights	1730, 1930, 2330mm
Width	1200mm SL 4000mm DL
Mesh size	200 x 55 mm
Wire diameter	5 mm horizontal and 5 mm vertical
Triangular folds	3
Top edge projection	30 mm†

† Can be inverted to give flush edge.

Locking Options



Standard Lock



Code Lock



Self Closers



Child Proof Lock



Fire Escape Lock



Mag Lock

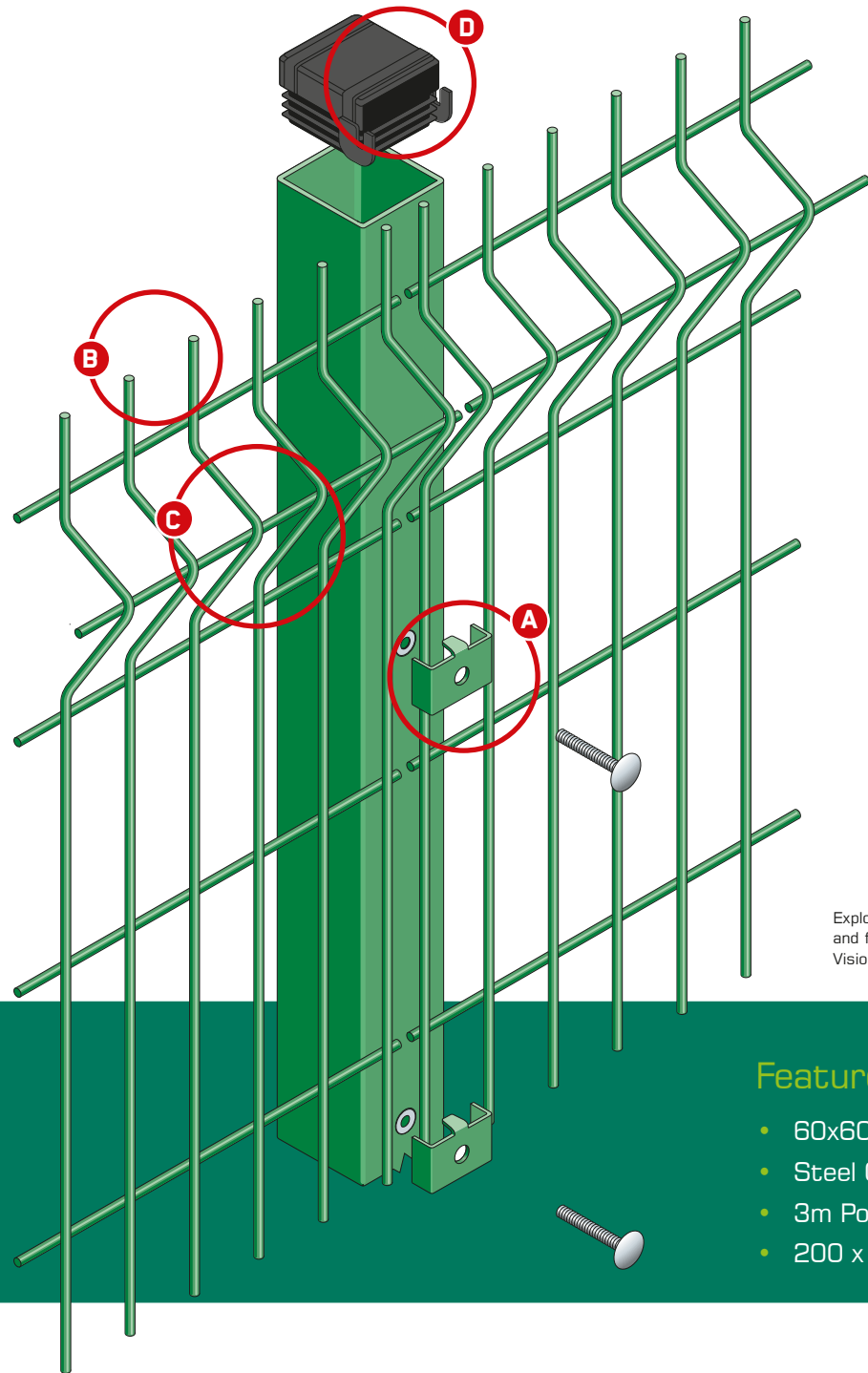
Vision Mesh™
Profiled panel system



OAKFIELD UK LTD

WELD MESH · SECURITY GATES · PALISADE

Vision Mesh™ TM Profiled panel system



Exploded view of post and fixing details for Vision Mesh panel system



- A** Easy fixing steel security clips
- B** 30mm projecting spikes
- C** Fully resistant welded joints with 5mm wires
- D** Unique Single Man installation cap to support fast and easy installation

Features:

- 60x60 RHS Post
- Steel Clips
- 3m Post centres
- 200 x 50 Mesh
- 5mm Wires
- Galvanised and Powder Coated
- Enhanced Security

Description

The Vision Mesh™ Profiled Panel System is a premium rigid welded mesh profiled panel system that lends itself to the security of many sites and applications. It is ideal for protecting your physical assets and property; the Vision Mesh™ system helps prevent vandalism, with the strong welded steel mesh panel and 30mm projecting spikes providing ample deterrent against even the most determined intruders.

The Vision Mesh™ panel system uses strong steel clips to secure the welded mesh panels to the steel posts. These clips - with 90° angled returns that prevent tampering - fit into threaded inserts on the posts and are fixed in place using pin torx bolts for enhanced security. The mesh panels and post are galvanised and polyester powder-coated as standard to offer years of protection against rust.

So whether it's protecting public buildings, car parks, business parks or domestic applications and land, the Vision Mesh™ system is the premium choice for security.

“The perfect fence for Homes, Farms, Yards... in fact anywhere you need a fence!”

Panel dimensions

Heights	1230, 1730, 1930, 2330mm
Panel width	3000 mm
Mesh size	200 x 55 mm
Wire diameter	5 mm horizontal and 5 mm vertical
Triangular folds	3
Top edge projection	30 mm†

† Can be inverted to give flush edge.

Finish

Galvanised and polyester powder-coated, after stringent cleaning and treatment, to give a high adhered coating. The full RAL range of colours are available by pre order. Minimum quantities and charges apply.

